

# Liteputer AW-105 LED Dimmer

## AW-105 LED Dimmer

Wall-mounted dimmer for precise dimming solutions

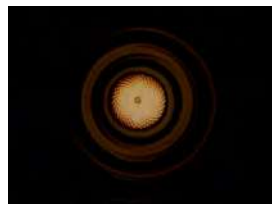
Importing CPU microprocessor 16384-step dimming curve control

Stable dimming and non-flickering even on only 1% of brightness level!

Generally, wall-mounted dimmers are simple and cheap to phase dimming and more than enough for tungsten lamp dimming control, but not good for LED dimmer, especially the flickering issue.

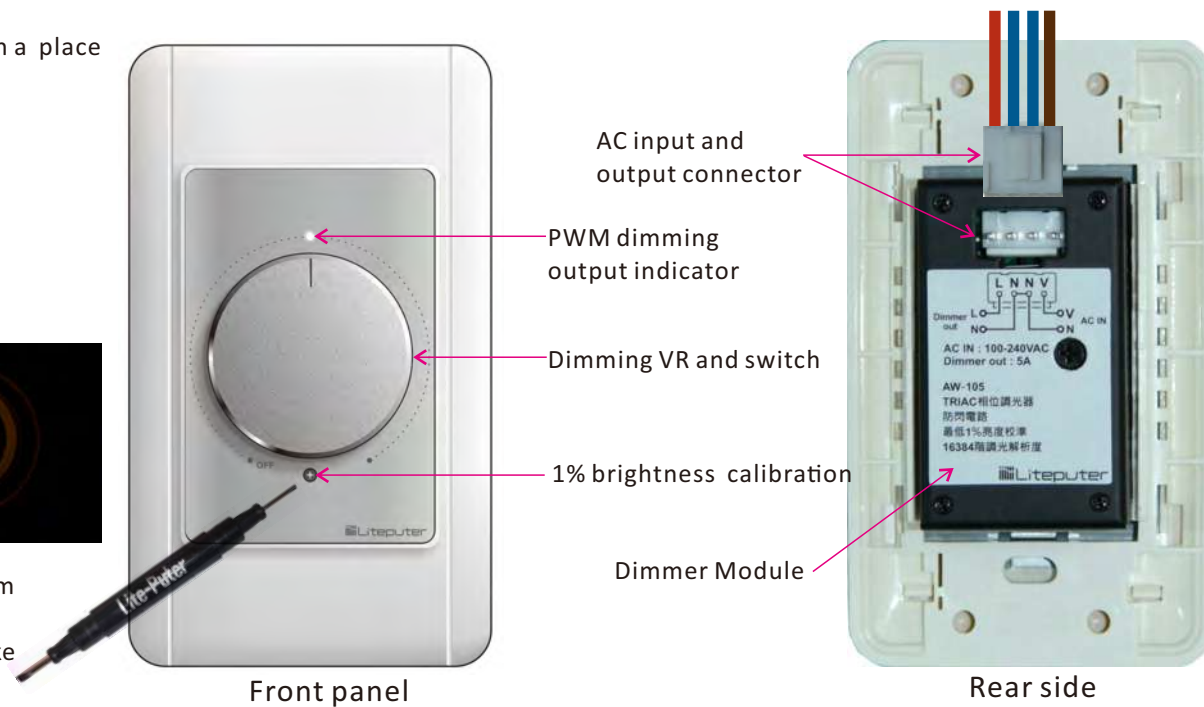
Liteputer's AW-105 LED-specific wall-mounted dimmer solves the problem completely, with CPU microprocessors as control central, providing up to 16384 step high resolutions with precisely dimming requirement on each step, non-flickering even on only 1% of dimming level.

1. Easy wiring
2. The rated current is 5A. If AW-105 is not installed in a place with good ventilation, 2.5A is recommended
3. Suitable for dimmable LED lamp or tungsten lamp
4. AC stable power supply
5. 16,384 steps dimming curve
6. Continuous trigger to prevent flickering
7. Active anti-flickering circuit
8. 1% lowest brightness calibration
9. Dimension: 70 x 120 x 35 mm (WXHxD)



### 1% lowest brightness calibration:

The series voltage of LEDs is different and the minimum brightness adjustment on 1% dimming level may be required. The minimum 1% brightness setting will make the entire dimming control smoother. Precision parts, please adjust carefully!!

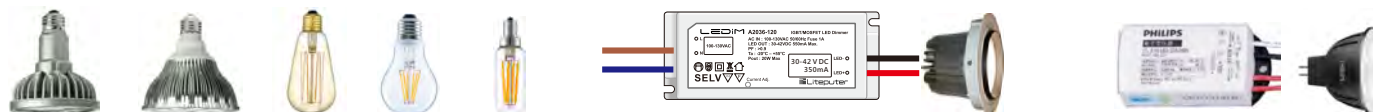


# Installation Instructions

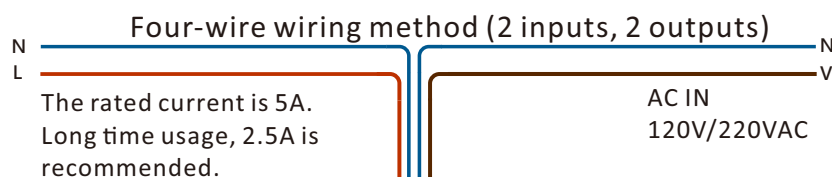
## AW-105 LED Dimmer

### Installation Instructions

1. AW-105 must be installed in a proper place with good ventilation and heat dissipation.
2. The rated current is 5A. Considering the heat dissipation, 2.5A is recommended! (500W/220V, 250W/120V)
3. AW-105 is a precise dimmer with slight different wiring from general dimmers, N wire connection needed.
4. The two N wires in the middle are connected in parallel.
5. For dimmable LED or the LED with dimmable transformer (driver) use only.
6. Some LEDs or dimmable transformers have uneven dimming quality, if you have any questions, please contact Liteputer.
7. The series voltage LEDs is different and the minimum brightness adjustment on 1% dimming level may be required.  
(Please adjust with 1.6mm screwdriver and adjust it carefully.)



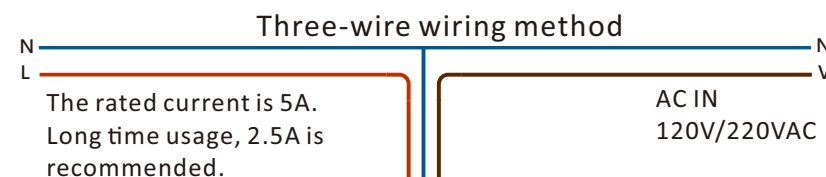
Must use dimmable LED lamps or the LED with dimmable transformer (driver)



Rear side



Front side



Rear side



Front side

List price: USD 55  
Warranty: 3 years