



Enlarge Your Home with Lighting

- › Interior area: 120 square meters
- › Location: Neihu, Taipei city
- › Lighting designer and installation: Lite-Puter
- › Interior designer: Angelica Hsu
- › Equipment: Lite-Puter lighting control system

EDX-607 Applications (3)

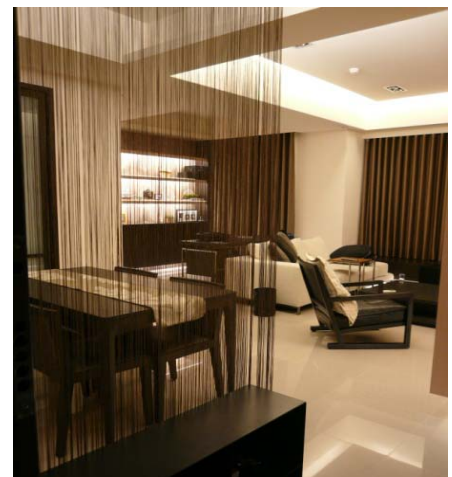
Light up a Happy Home Space by one Touch

This case is located at 4th floor of an apartment by Neihu MRT system, so the view out of the window is MRT's track. Due to lack of outdoor landscape and day light, designer change the layout of the interior and create a lighting environment through handling and using lighting effects. In order to combine the lighting environment and interior design, designer adopts Lite-Puter's EDX-607, an all-in- one lighting control wall station. EDX-607 can save preset scenes to the control panels in each room so that users can recall the scene by touching a button.

In order to maintain the spaciousness, the designer does not use any partition but integrate the entrance, the living room, the dining room and the study into one large public area. The four areas are divided by the design of lighting and ceiling. When guests enter the entrance, they can see the whole public area while each area has obvious segmentation.



▲ EDX-607, All-In-One Wall Station



Enlarge the Space by Lighting Design

To make the small apartment to feel like a mansion, the designer applied a lot of cove lighting in the public area. The cove lighting makes the space floating and puffing out, which creates a roomier feeling.

Save Energy And Create an Atmosphere by Change The Scene.

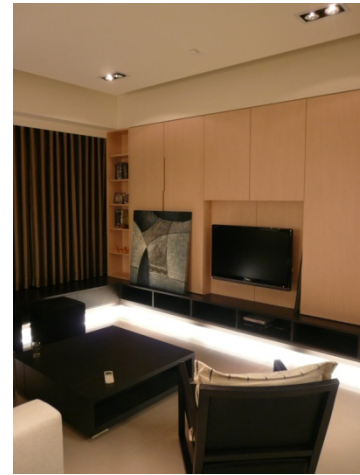
In consideration of different lighting needs, the designer set 3 lighting scenes for living room: General, TV and Reading.



▲ General lighting



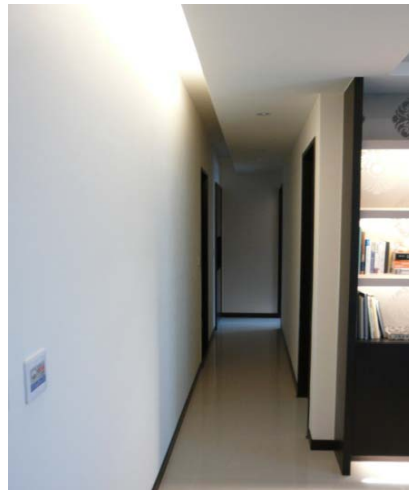
▲ Watching TV lighting



▲ Reading lighting



▲The Study: Install T5 fluorescent cove lighting under each layer of the bookcase to light up the wallpaper behind the bookcase, the books and the ornaments.



▲Corridor: The lighting in the corridor can not only direct the way but also create an interesting geometrical pattern.



▲EDX-607 can also control the curtain; in the Day Time scene, EDX-607 will open the curtain to bring daylight into the space and save energy.

>>> Master bedroom:
The designer installs cove lighting under the closet to form a floating feeling, so the space between bed and the closet would not be so narrow.



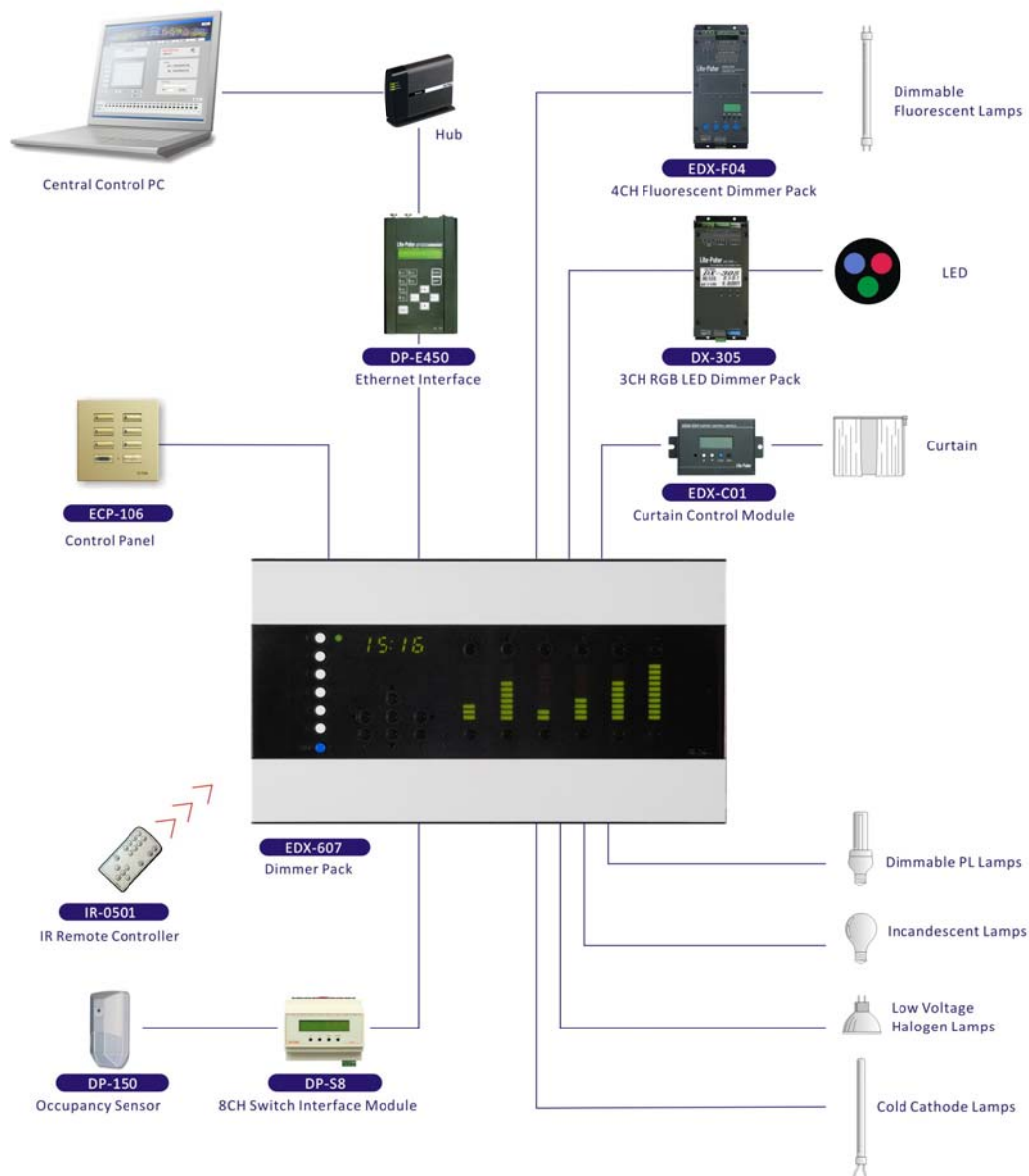
Equipment list:

EDX-607*6: Small size, easy installation and setting. Designer put 6*EDX-607 in the cabinet in the entrance. Owner can also set the scene by PC.

EDX-C01*5 : Link to EDX-607 to control 5 sets curtain in living room, study and master room. Integrated the curtain and lighting control, remote controller is no longer required.

ECP-106*7:

System Diagram



Lite-Puter

Taiwan Headquarter

Lite-Puter Enterprise Co., Ltd.

ADD: 9F, No. 196, Sec. 3, Da Tung Rd., Shijr City,
Taipei, Taiwan
TEL: +886-2-86472828
FAX: +886-2-86472727
Website: www.liteputer.com.tw
E-mail: sales@liteputer.com.tw

Branch Office

Lite-Puter Technology (Shanghai) Co., Ltd.

ADD: Building B5, No. 298, Lane 3509,
Hongmei S. Road, Shanghai, China
TEL: +86-21-64978076
FAX: +86-21-64978079
Website: www.liteputer.com.tw
E-mail: sales@liteputer.com.tw

Show Room

ADD: Room 701, Building 20, No.
487, Tianlin Road, Shanghai, China
TEL: +86-21-33674850
FAX: +86-21-33674013
Website: www.liteputer.com.tw
E-mail: sales@liteputer.com.tw