

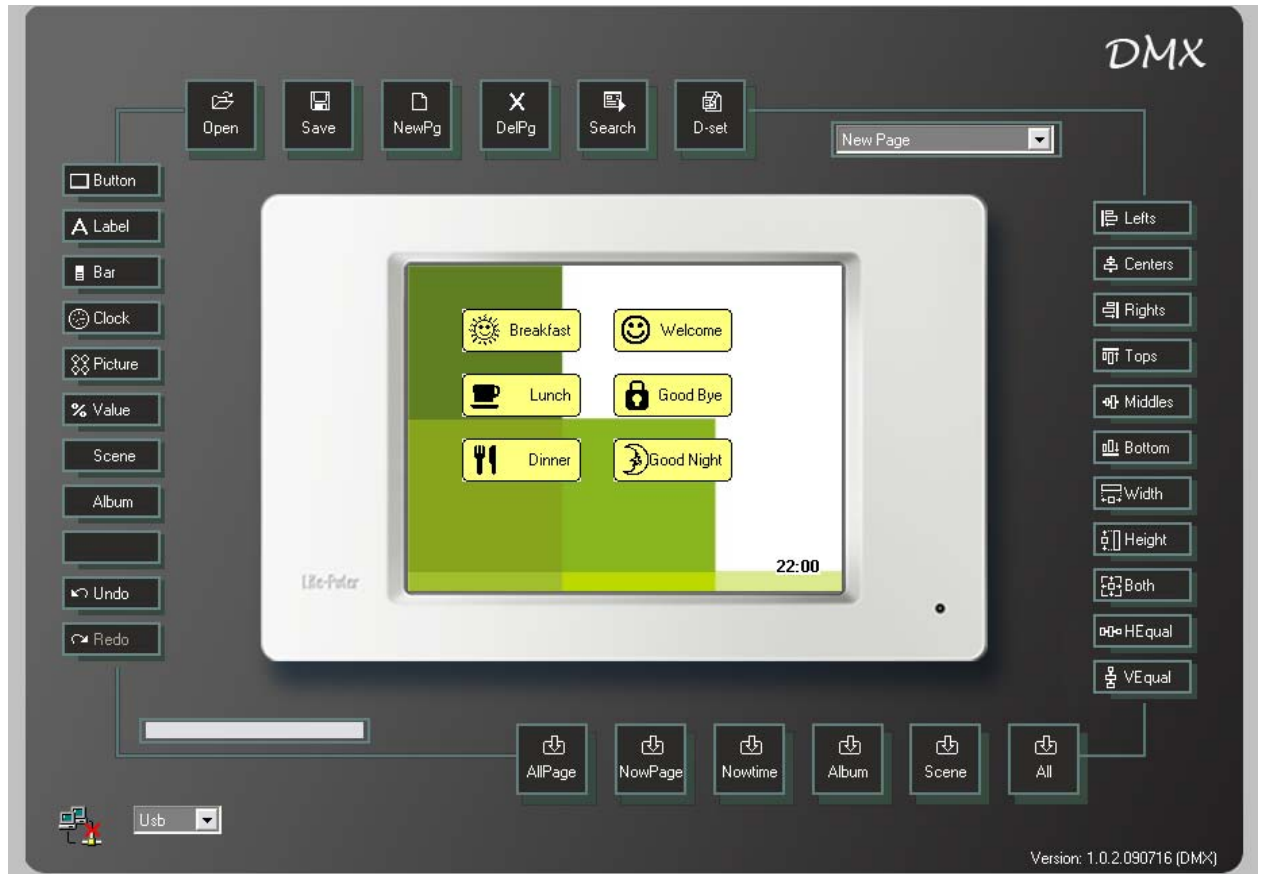
**ECP-T04: DMX Touch screen panel**

**Feature:**

- With programming software, user can configure button, label, bar, clock, value and picture by the software.
- Download the page configuration to ECP-T04 by USB/LAN.
- Build-in function:
  - ✧ Clock.
  - ✧ Backlight set (3 options: normal, turn off in 5 minutes and turn off in 20 minutes).
  - ✧ Timer.
  - ✧ Password protection.
- Accept IR remote controller control.

**Specification:**

Power supply	DC 12V
Signal input	RS-485 (EDX)
Signal output	DMX-512/1990
DMX/EDX terminal	4 PIN green terminal
Connection port	USB/LAN
RAM memory	256MB
Screen size	5.7 inch
Resolution	320*240 pixel
Color	262K colors
Size	215(W)x140(H)x 39(D)mm
Weight	520g

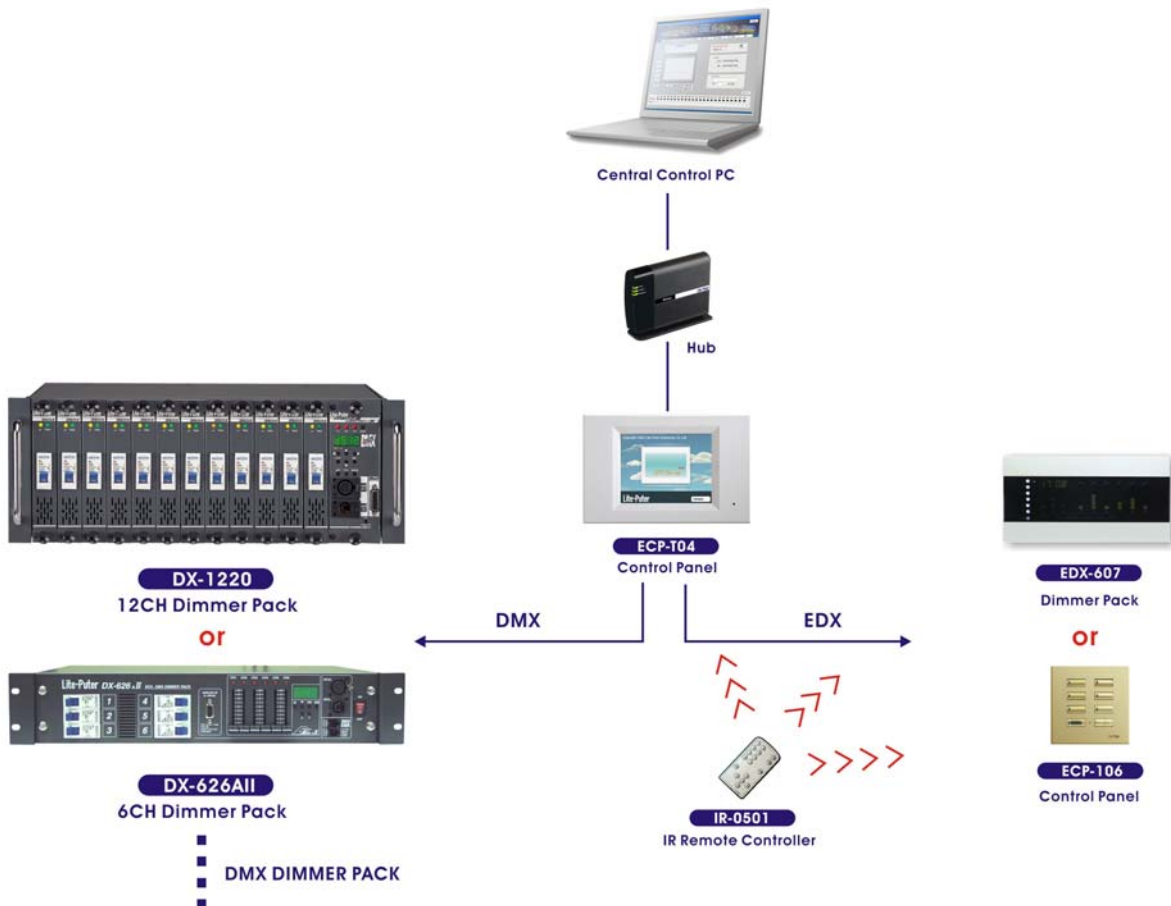
**Programming Software:**

**Port Introduction:**

1	USB port	3	EDX port
2	LAN port	4	DMX port



1 2 3 4

EDX		DMX	
GND	D+	D-	VCC

**System diagram:**

**Lite-Puter** LITE PUTER ENTERPRISE CO., LTD

9F. No. 196, Sec.3, Datung Road, Shijr City, Taipei, Taiwan

 Website: [www.liteputer.com.tw](http://www.liteputer.com.tw) E-mail: sales@liteputer.com.tw

TEL: +886-2-8647-2828 ext.321, 322 FAX: +886-2-8647-2727